

**FORMAX**®

HERE BEGINS YOUR ULTIMATE VALUE

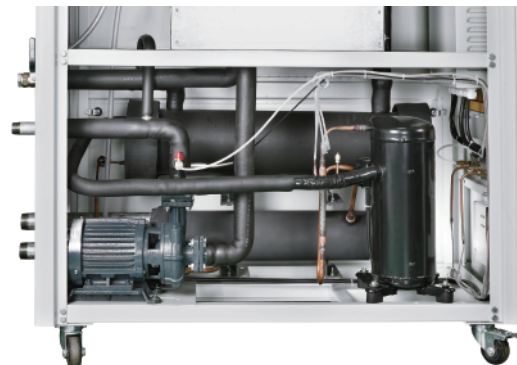
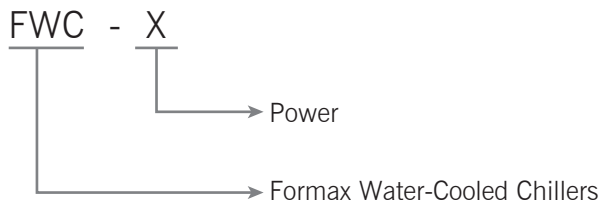
**FWC** Series  
FWC Water-Cooled Chillers

FWC



Please read the brochure carefully before operation.

## ■ Coding Principle



## ■ Features

- Cooling temperature range 3-30°C.
- Stainless steel insulated water tank.
- Anti-icing protection device.
- Using R22 insulation refrigerant, the refrigeration effect is good.
- Compressor and pump with overload protection.
- High precision controller with display accuracy of  $\pm 0.1^{\circ}\text{C}$ .
- Adopt brand compressor, low noise, high energy efficiency and long service life.
- FWC single unit with low pressure pump as standard, double units with middle pressure pump as standard.

## ■ Options

Voltage: 200~230V/60HZ  
Environment protection refrigerant : R407

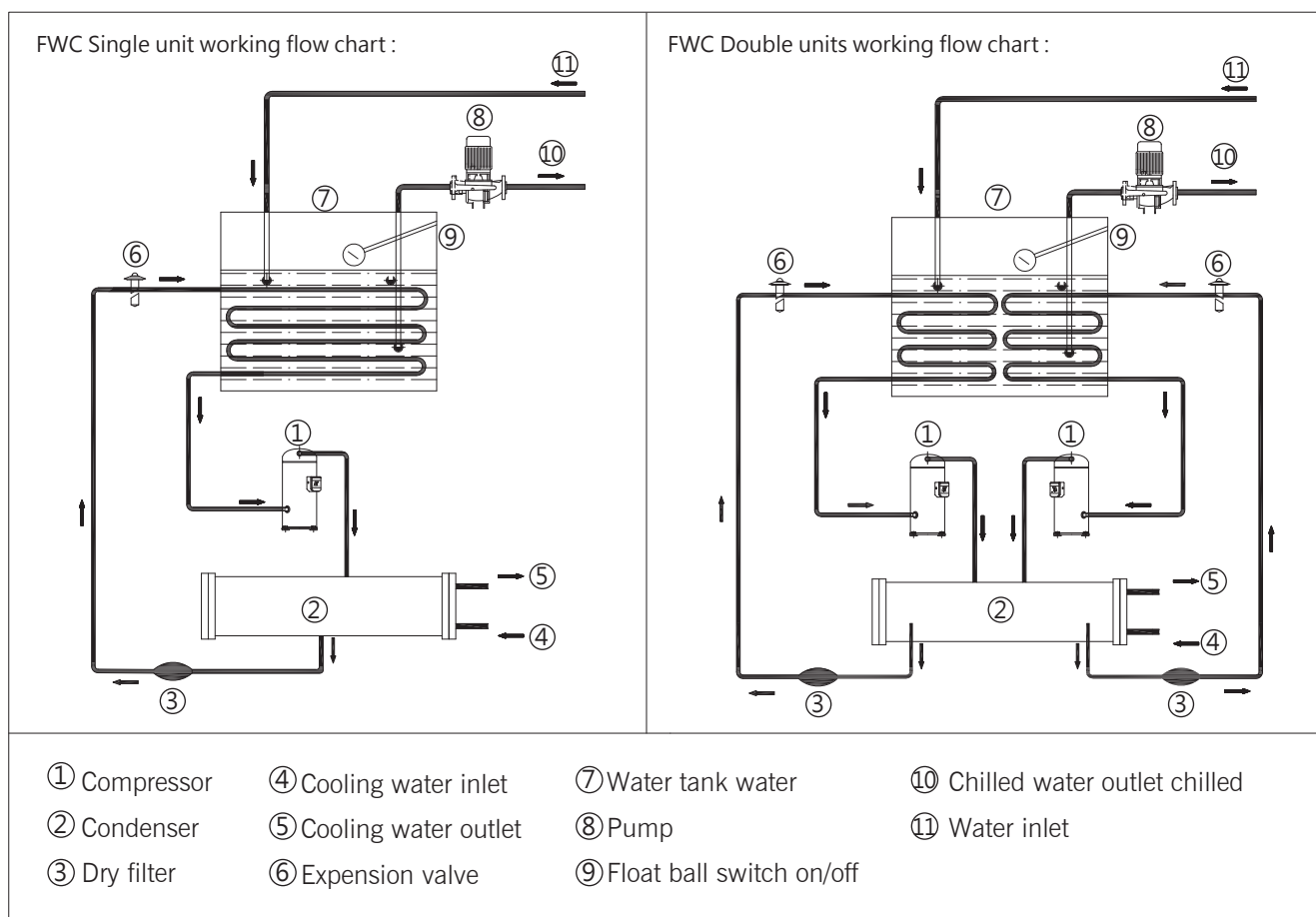
## ■ Application

Applied to mold cooling to reduce product molding cycle time, and it also can be used for cooling to keep the temperature of the equipment at normal temperature or other cooling industrial areas needed it.

## Working Principle

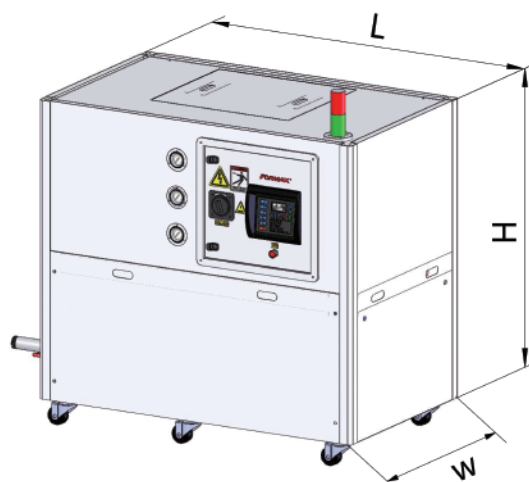
The liquid refrigerant in the evaporator absorbs heat from the water and begins to evaporate when the chiller refrigerant recirculation system, a certain temperature difference between the ultimate refrigerant and water, the liquid refrigerant is also completely evaporated to a gaseous state and then sucked in and compressed by

the compressor, gaseous refrigerant absorbs heat through the condenser, condensed into a liquid, after throttling through the thermal expansion valve turn into low temperature and low pressure refrigerant into the evaporator, complete the refrigerant cycle.



FWC Water-Cooled Chillers

## Outline Drawings



## ■ Specifications

Model	FWC		3	5	8	10	12
Cool Water Temperature	°C		3~30				
Cooling Capacity	kW		9.59	15.91	24.85	31.83	33.37
	kcal / hr		8251	13690	21370	27370	32994
Compressor	Type		Hermetic scroll type				
	Power	kW	2.2	3.75	3x2	3.75x2	4.5x2
		hp	3	5	8	5x2	6x2
Refrigerant	Filling Volume	kg	1.5	2.5	3.8	5	7
	Control Way		Thermo expansion valve				
	Type		R22 (CE type W / R407)				
Evaporator	Type		Coil-pipe (single circuit)		Coil-pipe (multiple circuit)		
Condenser	Type		Tube-in -shell style				
	Blower	kW	3/4	1	1.5	1.5	2
	Cooled Air Flow	cmh	34	57	89	114	137
Water Tank Capacity(L)			50	58	150	150	150
Pump	Power	kW	0.375	0.75	0.75	1.5	1.5
	Working Pressure	bar	2.2	2.3	2.3	2.15	2.15
	Pump Flow	(L/min)	28	46	71	91	110
Total Power(kW)			2.575	4.5	6.75	9	10.5
Pipe Coupling	Chilled Water Outlet	inch	3/4	1	1.5	2	2
	Chilled Water Inlet		3/4	1	1.5	2	2
	Water Tank Drainage Port		1/2	1/2	1	1	1
	Water Tank Overflow Port		1/2	1/2	1	1	1
Protective Devices	Compressor		Overload relay				
	Pump		Overload relay				
	Cooling Water Circuit		High and low pressure switches/Anti-freeze switch(optional)				
	Water Circuit		Flow switch(optional)/Water level switch/By-pass valve				
Voltage (Phase)			3P, 380~415V, 50HZ			220V(optional)	
Dimensions	(LxWxH)	mm	850x480x980			1200x610x1260	
Weight			120	150	210	290	310

Specifications are subject to change without prior notice.

■ Specifications

Model	FWC		15	20	25	30	40	50
Cool Water Temperature	°C		3~30					
Cooling Capacity	kW		50.14	67.14	81.53	99.19	129.06	153.91
	kcal / hr		43120	57748	70120	85303	110984	132359
Compressor	Type		Hermetic scroll type					
	Power	kW	5.5x2	7.5x2	9.4x2	7.5x3	7.5x4	9.4x4
		hp	7.5x2	10x2	12.5x2	10x3	10x4	12.5x4
Refrigerant	Filling Volume	kg	8.5	10	14	17	20	34
	Control Way		Thermo expansion valve					
	Type		R22 (CE type W / R407)					
Evaporator	Type		Coil-pipe (multiple circuit)					
Condenser	Type		Tube-in -shell style					
	Blower	kW	2	2	2.5	2.5	3	3
	Cooled Air Flow	cmh	179	240	292	355	462	551
Water Tank Capacity(L)			285	300	380	380	560	560
Pump	Power	kW	1.5	2.2	2.2	4	4	4
	Working Pressure	bar	2.15	2.2	2.2	2.5	2.5	2.5
	Pump Flow	(L/min)	143	192	233	284	369	441
Total Power(kW)			12.5	17.2	20.95	26	34	41.5
Pipe Coupling	Chilled Water Outlet	inch	2	2	2.5	2.5	2.5	3
	Chilled Water Inlet		2	2	2.5	2.5	2.5	3
	Water Tank Drainage Port		1	1	1	1	1	1
	Water Tank Overflow Port		1	1	1	1	1	1
Protective Devices	Compressor		Overload relay					
	Pump		Overload relay					
	Cooling Water Circuit		High and low pressure switches/Anti-freeze switch(optional)					
	Water Circuit		Flow switch(optional)/Water level switch/By-pass valve					
Voltage (Phase)			3P, 380~415V, 50HZ			220V(optional)		
Dimensions	(LxWxH)	mm	1460x700x1400	1750x760x1500		1750x760x1500	2200x920x1600	
Weight			400	440	690	760	850	1000

Specifications are subject to change without prior notice.



China  
**Formax Plastics Automation, Inc.**

Dongguan  
 Xianxi New Industrial Zone, Xianxi Community,  
 Changan Town, Dongguan, Guangdong, China  
 Tel. +86-769-3899-9898 Fax. +86-769-8533-3467

Kushan  
 No.138-20, Hengshan Road, Kunshan, Jiangsu, China  
 Tel. +86-512-5700-8308 Fax. +86-512-5700-8306

Taiwan  
**Formax Equipment Inc.**

7F-1, No.265, NanKang Road, Luchu Dist.,  
 Taoyuan City, Taiwan  
 Tel. +886-3-2121-725 Fax. +886-3-2127-960

[www.formax88.com](http://www.formax88.com)  
[www.formaxpa.com](http://www.formaxpa.com)



All rights reserved.